



PGDM- HEALTHCARE MANAGEMENT (HCM)

PLACEMENT REPORT

2023-25



MESSAGE FROM THE PGDM (HEALTH CARE MANAGEMENT) PLACEMENT CHAIR



Prof. Shawnn Coutinho

Associate Professor and Placement Chair
Goa Institute of Management

It is with great pride and satisfaction that we present the Placement Report for the PGDM – Healthcare Management (HCM) program at the Goa Institute of Management for the Batch of 2025

The HCM program at GIM stands as a pioneering initiative, blending the rigor of management education with the intricacies of the healthcare ecosystem. In an era where the healthcare sector is rapidly evolving, both in complexity and opportunity, our students are uniquely prepared to navigate challenges and drive innovation across the healthcare value chain.

This year's placement season has been a testimony to the growing recognition of our program by leading healthcare organizations, including consulting, med-tech, med-devices, pharmaceuticals, insurance, healthcare services amongst others. Our students have secured roles that not only match their skills and aspirations but also place them at the forefront of impact-driven healthcare management.

The success of this placement season is a result of the collective effort of our students, faculty, alumni, and corporate partners. I extend heartfelt thanks to our recruiters who have trusted the capabilities of our students, to the faculty who have continually mentored and inspired them, and to the Placement and Corporate Relations team for their dedication and strategic outreach.

As the healthcare landscape continues to evolve, we remain committed to developing professionals who are not just industry-ready but also ethically grounded and socially conscious. We look forward to strengthening our partnerships with industry and contributing to the future of healthcare leadership.



**PGDM (HCM) PLACEMENT SEASON HIGHLIGHTS
BATCH OF 2025**



BATCH PROFILE
GENDER DIVERSITY



Female

50%



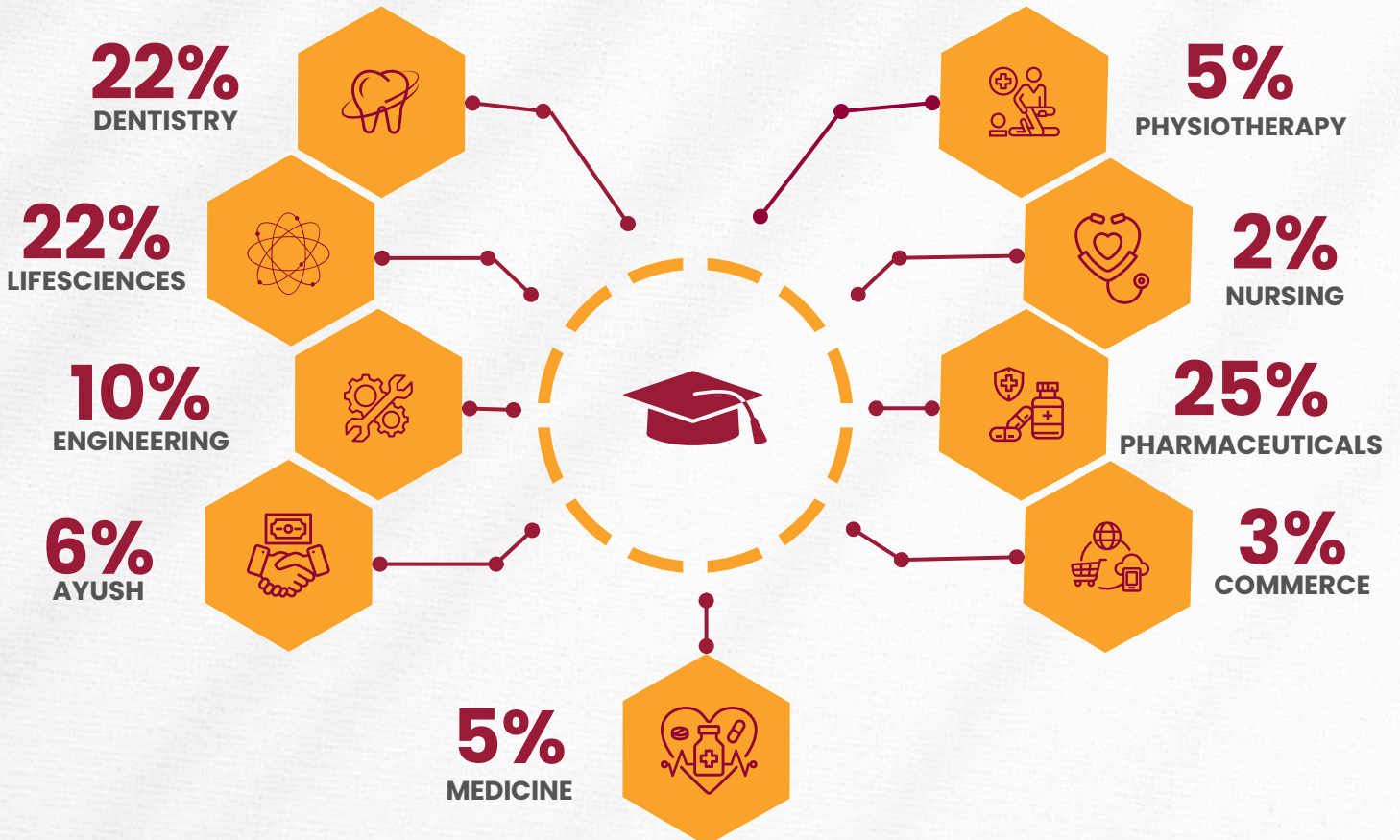
Male

50%

WORK EXPERIENCE



ACADEMIC BACKGROUND



PROFESSIONAL BACKGROUND

11%

IT/ITES



11%

PHARMACEUTICALS



7%

MEDICAL DEVICE



4%

CONSULTING



46%

HEALTHCARE PROVIDERS



21%

OTHERS



MAJOR RECRUITING SECTORS

36%

HEALTHCARE
IT

30%

MEDICAL DEVICE

15%

PHARMACEUTICAL

7%

HEALTHCARE PROVIDERS

5%

CONSULTING

5%

HEALTH INSURANCE

2%

HR

MAJOR RECRUITERS

Johnson & Johnson

BAIN
& COMPANY

PHILIPS

Providence

zydus
Dedicated To Life

INTUITIVE
SURGICAL®

ZIMMER BIOMET

Cochlear™

adani

BSV
bringing life to life

sagility®

firstsource®

BURJEEL
HOLDINGS

bioradmedisys™
science for people

nephroplus

**PGDM – HEALTH CARE MANAGEMENT
SUMMER INTERNSHIP HIGHLIGHTS**

BATCH 2024-2026

3,00,000

HIGHEST STIPEND

86,561

AVERAGE STIPEND

60,000

MEDIAN STIPEND

2,19,167

TOP 20% STUDENTS

1,33,929

TOP 50% STUDENTS



60

Total Number
of Students



22

Number of Companies that Visit
for Campus for Summer Internship

BATCH PROFILE
GENDER DIVERSITY



Female

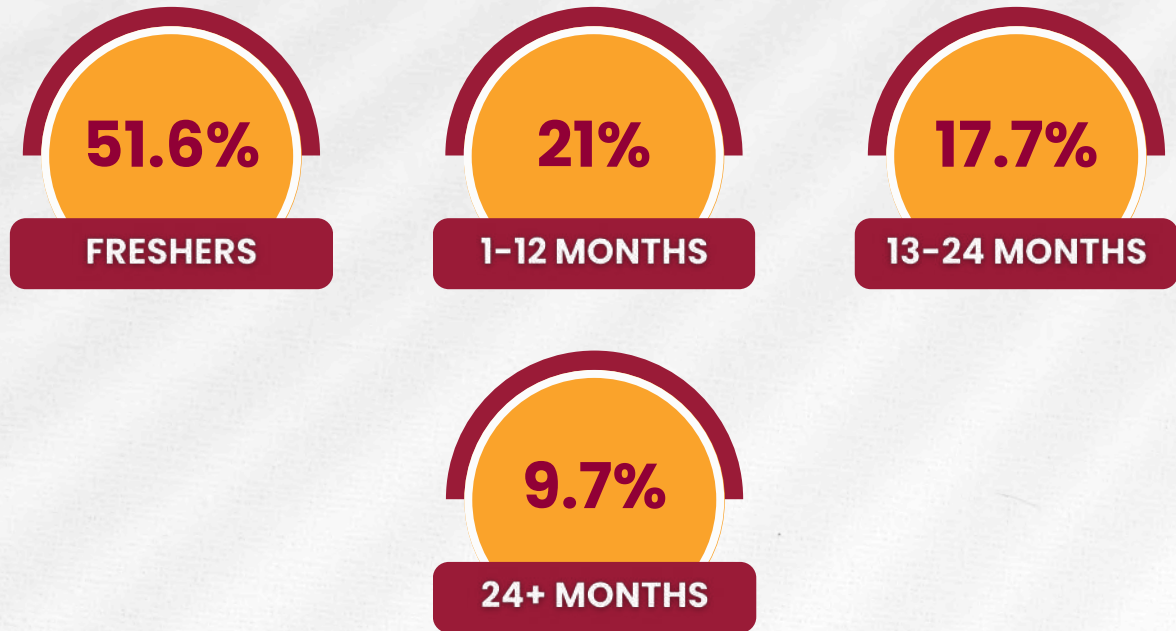
49%



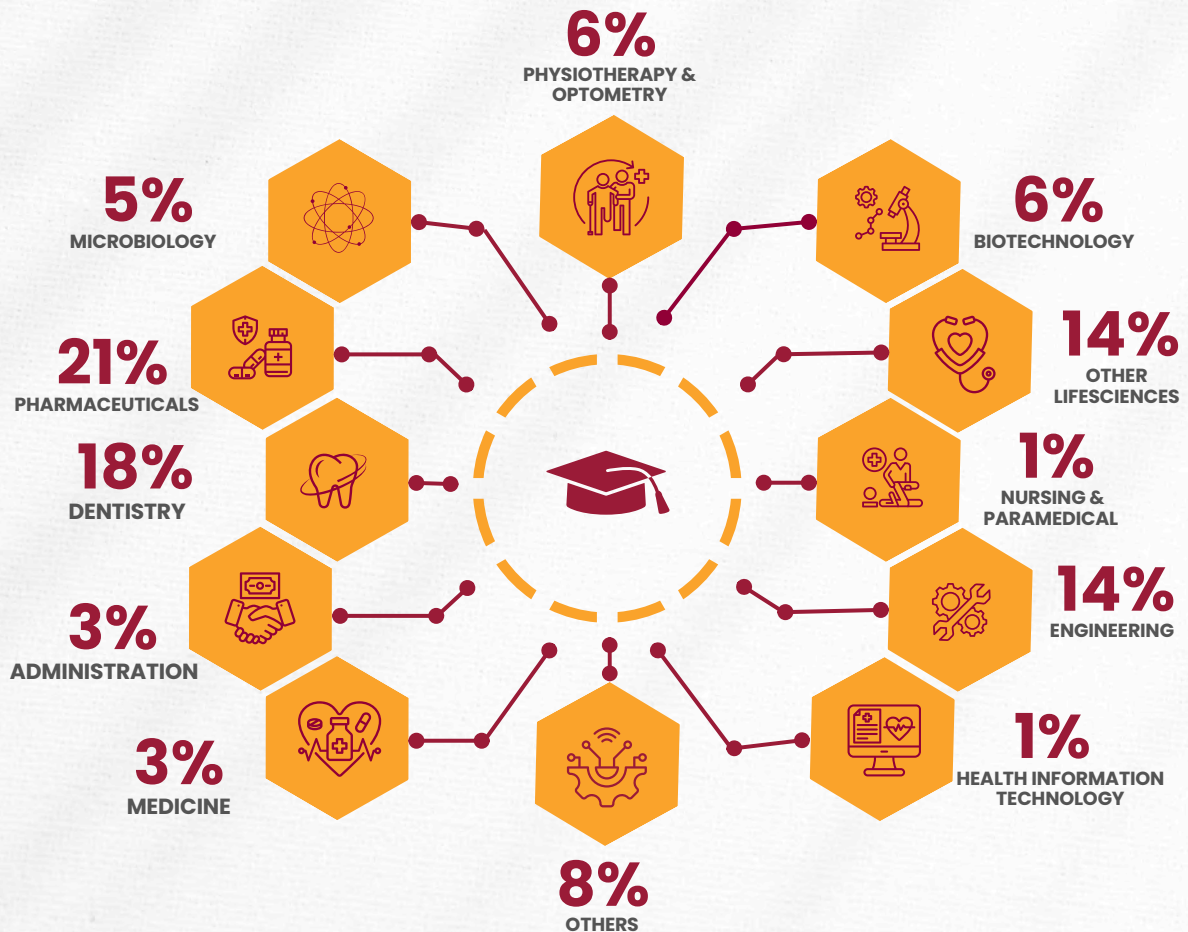
Male

51%

WORK EXPERIENCE



ACADEMIC BACKGROUND



PROFESSIONAL BACKGROUND

17%

MEDICAL DEVICES & HEALTH IT



17%

PHARMACEUTICALS



7%

CLINICAL RESEARCH



7%

CONSULTING



32%

HEALTHCARE PROVIDERS



20%

OTHERS



MAJOR RECRUITING SECTORS

38%

MEDICAL
DEVICE

19%

HEALTHCARE
IT

12%

PHARMACEUTICAL

4%

HEALTHCARE
PROVIDERS

14%

CONSULTING

11%

HEALTH
INSURANCE

2%

HEALTH
FINANCING

MAJOR RECRUITERS

Johnson & Johnson

BAIN
& COMPANY

 Providence

PHILIPS

 **BSV**
bringing life to life

 **BOSCH**

 nephroplus

 **care** HEALTH
INSURANCE

 **TERUMO**
PHARMACEUTICAL SOLUTIONS



 **URGO**
MEDICAL
Healing people®

